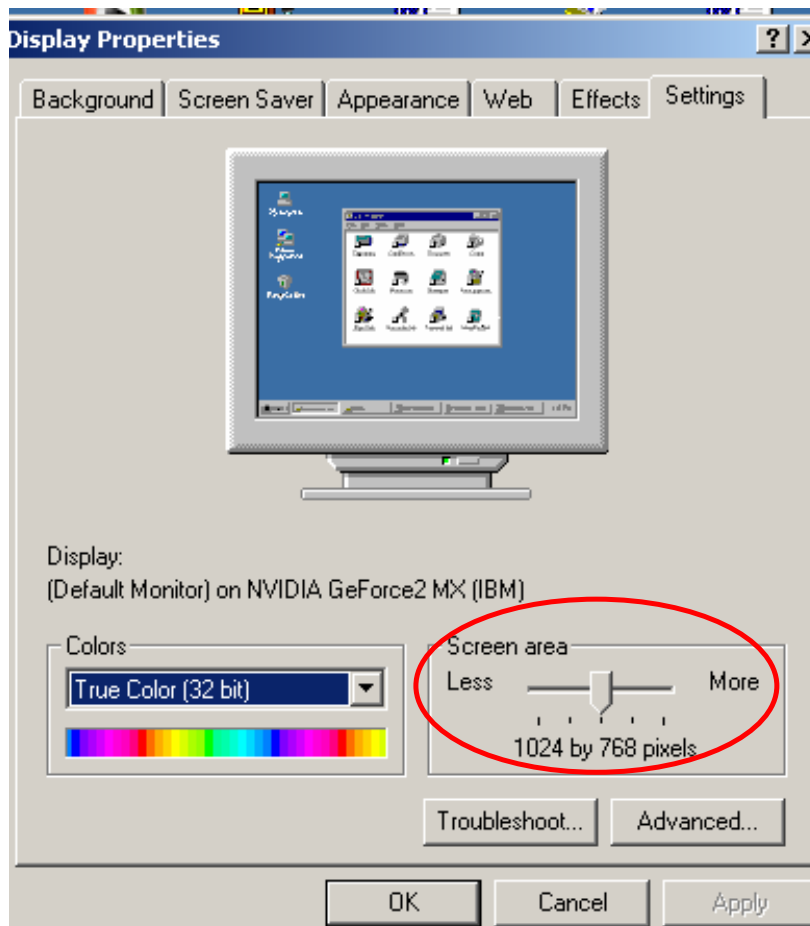


EE 200 ONLINE COURSE DIGITAL LOGIC CIRCUIT DESIGN Course Access Guidelines

This is the EE 200 Online course, which is offered on the WebCT platform. The course is the Digital Logic Circuit Design, and consists of ten units that cover the syllabus for EE 200. Each unit is divided into a number of lectures. These lectures can be accessed sequentially or out of order. You can access any lecture from the course menu on the WebCT, once you have an account created for you. However, you need to have Authorware Webplayer installed on your PC. The Webplayer for Authorware will be automatically installed from the network once you try to view your first lecture (The installation will take some time based on the network speed and the load on the network).

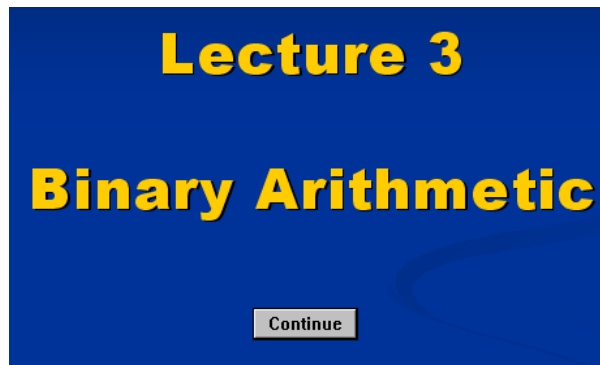
Recommended Screen Resolution

These lectures can be best viewed with (1024x768) resolution, which can be adjusted as shown below. Right click on the screen and choose properties option on the menu, then you will see the following Display Properties window.



Title Slide

When you first click on a lecture link in WebCT, the WebCT server opens up the lecture and a title slide is displayed as shown below:



The title slide displays the lecture number and the lecture title and plays a speech file. It then displays a “Continue” button which must be clicked to proceed to the actual lecture.

A **screen shot** of a lecture with the various buttons and indicators is shown below:

Binary Arithmetic (Lecture Topic) EE 200 **Lecture 3** (Lecture Number)

Binary Multiplication (Lecture Topic)

Multiplication with binary numbers is performed in the same way as with decimal numbers. It involves performing partial products, shifting each partial product left one place, and then adding all the partial products.

Four basic rules of multiplying bits:

Rule
$0 \times 0 = 0$
$0 \times 1 = 0$
$1 \times 0 = 0$
$1 \times 1 = 1$

Example:

$$\begin{array}{r} 1\ 1\ 0\ 1 \\ (\times) \\ \hline \\ 1\ 1\ 1\ 0\ 1 \\ 1\ 0\ 0\ 0\ 0 \\ (+) 1\ 1\ 0\ 1 \\ \hline 1\ 0\ 0\ 0\ 0\ 0\ 1 \end{array}$$

Slide done indicator (Slide Done button)

Previous and Next slide buttons (Left and Right arrow buttons)

Sound Off check box (Sound Off checkbox)

Slide number indicator (Slide 10 of 13)

Menu button (Menu button)

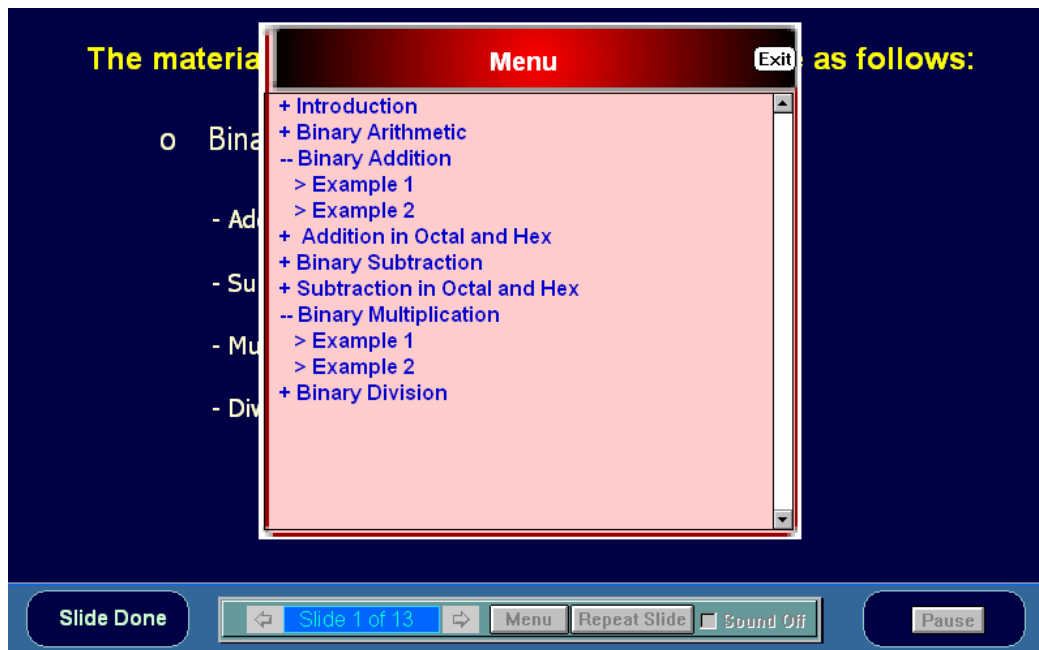
Repeat Slide button (Repeat Slide button)

Pause button (Pause button)

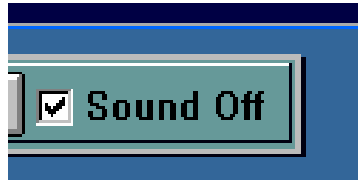
Description of Buttons and Indicators

Each lecture has multimedia features and buttons for navigation through the material and a few special functions and indicators as mentioned below:

- **Previous and Next** slide buttons
These buttons allow navigation through the material one page at a time.
 - “**NEXT SLIDE**” button allows you to go to the next slide unless you are on the last slide
 - “**PREV SLIDE**” button allows you to go to the previous slide unless you are on the first slide
- **Menu** button
 - Each lecture is divided into sub-topics that can be directly accessed through the Menu. Pressing the Menu button brings up the “Menu” of lecture topics which allows you to select a topic by clicking it, so that you can go to any topic directly without having to go over all the slides one by one. When you click on a “+” sign the menu is expanded to display the sub-topics.

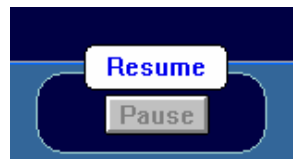


- **Repeat Slide** button
This button allows the student to repeat the presentation on that slide.
- **Sound Off** Check box
While the Sound Off is “Checked” the presentation of the material is speeded-up and sound is turned off. It must be unchecked to turn sound ON again.

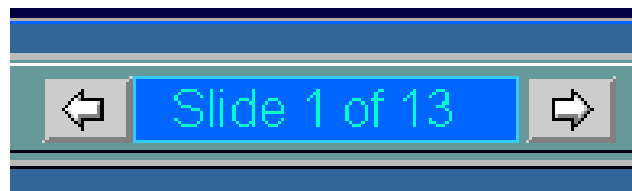


This feature allows the student to view the material without sound if he so wishes. This is particularly useful for a quick review of the material when he has already gone through the material once with all its multimedia features playing.

- **Pause** button
The Pause buttons allows the student to stop the presentation including **Speech** on the slide at any time. You can resume the slide presentation by clicking on the **Resume** button which is displayed when the **Pause** button is clicked.



- The **Lecture Topic** is shown on the top left corner of the slide.
- The **Lecture Number** is shown on the top right corner of the slide.
- **Slide number indicator** is located between **NEXT SLIDE** and **PREV SLIDE** buttons. It shows the current slide you are on and the total number of slides that constitute the lecture.



- Once the slide is completed, it is indicated by a **Slide Done** indicator on the bottom left corner of the slide.

